

1005

Fog Machine



Catalog

DRY ICE
Fog Machine

Nebula





Nebula

Nebula Dry Ice Fog Machine creates a high quality visual effect. The fog produced with dry ice is denser and does not dissipate immediately. Fog produced with dry ice collapses because it is colder than air and carbon dioxide is denser than air.

The most important difference of dry ice from normal ice is that when it melts, it turns into a gas, not a liquid (sublimation). A fog machine is a system that melts dry ice with the help of heat and blows the smoke out of the machine.



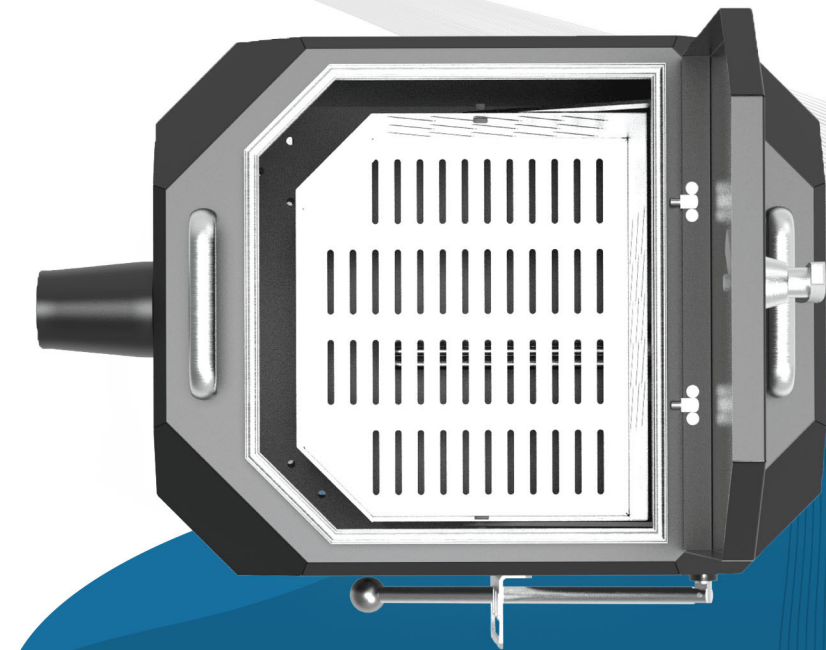


Visual Effects

When dry ice is immersed in hot water, it sublimates (changes from solid to gaseous) and produces strongly bubbling fumes. The fumes produced are bubbles filled with cold gas. Although dry ice starts to produce fog even when exposed to air at room temperature, the effect and intensity of the fog it produces doubles, especially when it comes into contact with hot water. In addition, dry ice fog machines are the first choice because they do not pose a health hazard. The fog machine used in art, entertainment and organizations adds visual richness with the ambiance it creates.



- Nature Friendly
- High Quality Fog Effect
- Stainless Ice Bin
- Compact Design
- High Hopper Capacity
- User Friendly Design
- Mobility
- Visual Impact on Low Ground
- Indoor and Outdoor Use
- Manual Operation



Areas of Use

- Photo Shootings
- Theater
- Musical
- Opening Organizations
- Concert Organizations
- Clip
- Dance Performances
- Series Filming
- Movie Shootings
- Wedding Organizations
- Engagement Organizations
- Henna Organizations
- Product Promotions
- Entertainment Venues



AT-1005 Nebula

Dry Ice Fog Machine

Size	470 x 600 x 630 mm
Weight	18 kg
Dry Ice	Pellet
Measure	16 mm
Capacity	14 kg
Water Temperature	80 °C
Tank Liters	38 L
Current	8 A
Input Voltage	220 V

